



## Key Features and Benefits

- Under 26,000 lbs
- Up to 2 Hour Run Time
- Chemical Free
- Great for Small Airports
- Vacuum Free Recovery
- Up to 40,000 PSI

The 4006 ST is integrated to a Ford F-550 chassis for easy transport between cleaning sites. The cleaning heads are easily changeable from rubber to paint. It has an intuitive LCD operator interface for easy control by the operator. Using a low volume of water the 4006ST is the perfect eco-friendly system for small airports.

## How It Works

- Within the Cyclone head, up to 24 sapphire-tipped spray nozzles mounted high speed rotating arms, blast the surface with ultra-high pressure water.
- Specially shaped turbine blades, mounted to the arm, create a swirling vortex of air, water, and loosened rubber or paint at 140 mph - equivalent to a category 4 cyclone storm.
- As the Cyclone head moves along the surface, the Cyclone vortex provides a secondary cleaning effect, while simultaneously lifting the waste & water off the surface and whipping it into a small tank mounted on the top of the head.
- A high-volume macerator pump further emulsifies and pumps the recovered waste water slurry into the large 1,000 gallon (3,785 liter) waste recovery tank located at the rear of the vehicle.
- Cyclone Technology's vacuum free design means less maintenance and lower annual fuel cost; resulting in a faster return on investment.



### Variable Pump

Variable UHP pump standard. Adjustable pressure for different applications



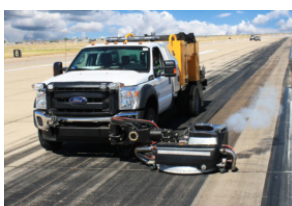
### Deep Cleaning

Cleans into the grooves of a runway for increased friction and drainage



### Control Panel

The easy to use operator interface allows for safe and accurate control of the cleaning system.



### Single Pass Cleaning

Able to return the friction coefficient to acceptable levels in a single pass.

Technical Specifications	4006ST
Cleaning Head Assembly	Removable, hydraulically controlled, multi-pivot point maneuverability. Cast aluminum rubber housing and a cast iron paint housing, fiberglass recovery tank. Belt-driven return pump. Rubber or paint removal head max work pressure is 40,600 psi (2,800 bar) at 6.3 gpm (23.8 L/min)
Cleaning Attachment	Gas powered, remote paint removal head up to 300 ft (91 m) distance
Rubber Removal Head	40 in (1.01 m) cast aluminum head with up to 34 in (0.86 m) cleaning path. Hydraulically actuated with a multi-axis arm, joystick-controlled by the operator
Paint Removal Head	24 in (60.96 cm) cast iron with adjustable 6 in (15.24 cm) to 16 in (40.64 cm) cleaning path. Hydraulically actuated with a multi-axis arm for easy maneuverability
Productivity (Rubber)	Up to 20,000 ft <sup>2</sup> (1858 m <sup>2</sup> ) per hour*
Productivity (Paint)	Up to 3,000 linear ft (914 m) per hour **
Filtration System	Inlet water filtered to 0.35 micron over 260 ft <sup>2</sup> of organic particulate filtration
Water Filters	Minimum of two (2) filters before UHP pump: One (1) organic 50 micron filter one (1) particle 0.35 micron filter . Combined filter media surface area of over 260 ft <sup>2</sup>
Water Pump	Triplex plunger, with pressurized lubrication, water cooled, 6.3 gal (23.8 L) per minute @ 40,600 psi, variable output from 6,000 psi (414 bar) to 40,600 psi (2,800 bar)
Fresh Water Tank	530 gal. (2,018 L) internally baffled, welded polypropylene
Reclaim Tank	Separates water from material. 600 gal. (2,271 L) total capacity. Powered dump with powered door for easy maintenance. Available in aluminum
Chassis	Ford F-550 4x2 style
Speeds	Cleaning speed: Up to 1.7 mph (2.72 km/h), Transport Speed: Up to 100 mph (160 km/h)
Dimensions (L x W x H)	28 ft 6 in L x 7 ft 10 in W x 7 ft 4 in H (8.69 m L x 2.39 m W x 2.06 m H) Fits into a standard shipping container
Gross Vehicle Weight Rating	19,500 lbs (18,845 kg)
Fuel Tank	40 gal (151 L) total fuel capacity
Controls	Automated cleaning controls. Computer monitored safety and maintenance system with automatic shut down.
Steering	Power steering
Power Plant Engine	Engine is a 330 HP (246 kw) 6.7 L Powerstroke V8 with an intercooled turbocharger, diesel direct injection, air filter with pre-separator, radiator cooler with fan and sensor
Pump Safety	Pressure relief burst disk will relieve all pressure if there is an increase of 7% above maximum recommended operation pressure

## Standard Features

- Uses a low volume of water to provide effective rubber removal and paint removal.
- Simple, on-board, gravity based separation of waste from water
- Patented Cyclone head provides full recovery without the need for a vacuum
- Low clearance allows for paint removal inside most parking structures
- Computer monitoring of the equipment and drive to protect both the surface and machine
- Adjustable pressure allows for center line cleaning and gate cleaning without damage to the surface or paint.

## Contact Us

1845 W. 1st St. Suite 101  
 Tempe, AZ 85281  
 Phone : 480.345.7733  
 Email : info@cycloneclean.com  
 Website : www.cycloneclean.com



## Optional Accessories

- Instant recovery
- Walk-behind unit provides excellent maneuverability
- At 40,000 psi (2,757 bar) the CY200 UHP is ideal for paint removal
- Consistent results with a range of up to 300 feet (91 m)

CY200 UHP



**Faster, Greener, Cleaner**  **The Cyclone Difference**

*Waterjet Technologies, LLC is an authorized distributor of Cyclone Technology hard surface cleaning systems. Cyclone Technology has over 30 years of industry experience designing and manufacturing hard surface cleaning and rubber removal machines. The multi-patented Cyclone cleaning head, featured on all products, is the state of the art in green technology.*